

# CLIN-TECH

LIMITED

## PAPANICOLAOU KIT

IVD

Catalogue numbers  
631350



### INTENDED USE

This Papanicolaou Staining kit is intended for the demonstration of changes in cervical epithelial cell morphology.

### KIT PRESENTATION

#### Reagents

- Papanicolaou EA 50                    500 mL
- Papanicolaou Orange G6                500 mL
- Harris's Acidified Haematoxylin      500 mL

Also required but not supplied

- IMS / Ethanol
- Scott's Tapwater Substitute            our code 64128x

### PROTOCOL

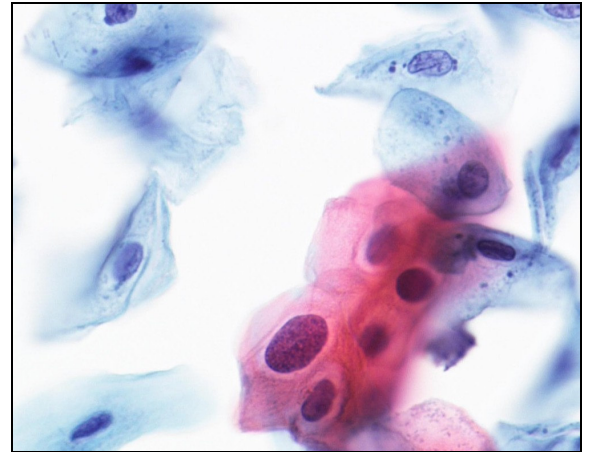
#### Preparation

- 1) Remove Polyethylene Glycol fixative in 50 % alcohol, 2 min.
- 2) Hydrate in 95 % alcohol, 2 min, and 70 % alcohol, 2 min.
- 3) Rinse in water, 1 min.

#### Test Method

- 4) Stain in Harris's Acidified Haematoxylin, 5 min.
- 5) Rinse in water, 2 min.
- 6) Differentiate in 0.5 % aqueous hydrochloric acid, 10 secs.
- 7) Rinse in water, 2 min.
- 8) 'Blue' in Scott's Tapwater Substitute if necessary, 2 min.
- 9) Rinse in water, 2 min.
- 10) Dehydrate in 70 % alcohol, 2 min.
- 11) Dehydrate in 95 % alcohol, 2 min. Repeat this step.
- 12) Stain in Papanicolaou Orange G6, 2 min.
- 13) Rinse in 95% alcohol, 2 min. Repeat this step.
- 14) Stain in Papanicolaou EA 50, 3 min.
- 15) Rinse in 95 % alcohol, 1 min.

### Results



|   |               |
|---|---------------|
| Nuclei stains                               | Blue-Black    |
| Cytoplasm (non-keratinising squamous cells) | Blue-Green    |
| Keratinising cells                          | Pink - Orange |

### NOTES

- 1) Timings may be altered to suit personal preferences.
- 2) Stains should be changed frequently.
- 3) Alternatives to Scott's Tapwater Substitute include 0.1% ammoniated water, or a weak aqueous solution of lithium carbonate.

### REFERENCES

1. Theory and Practice of Histological Techniques, 5th Edition, Bancroft JD, Gamble M (editors), Churchill Livingstone, New York (NY), 2002, p 127-128
2. Diagnostic Procedures for Viral, Rickettsial and Chlamydial Infections, 6<sup>th</sup> Edition, Schmidt NJ, Emmons RW (editors), American Public Health Association Inc. (Washington DC), 1989, p 1183.

Clin-Tech Ltd  
Unit G Perram Works  
Merrow Lane  
GUILDFORD  
GU4 7BN  
United Kingdom

Telephone:  
+44 (0)1483 301902  
Fax:  
+44 (0)1483 301907  
Email:  
info@clin-tech.co.uk

Instructions for use edition C22-41