

CLIN-TECH

LIMITED

VERHOEFF'S ELASTIN STAIN KIT

V

Catalogue numbers
631115

C

INTENDED USE

The Clin-Tech Verhoeff's Elastin Stain Kit is used for the demonstration of elastic fibres.

KIT PRESENTATION

Reagents

<input type="checkbox"/>	Verhoeff's Elastin Stain 1	500 mL
<input type="checkbox"/>	Verhoeff's Elastin Stain 2	250 mL
<input type="checkbox"/>	Verhoeff's Elastin Stain 3	250 mL
<input type="checkbox"/>	Verhoeff's Differentiating Fluid	500 mL
<input type="checkbox"/>	Van Gieson's Stain	500 mL

Also required but not supplied

- Neutral Mounting Medium (DPX) – Clin Tech 61030x
- Alcohols for dehydration
- Xylene

PROTOCOL

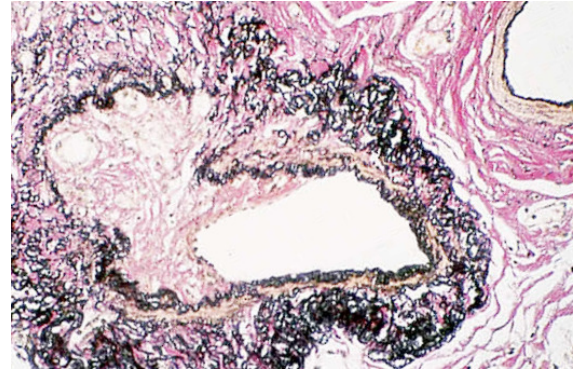
Preparation

- 1) Deparaffinise sections and bring to water.
- 2) Make up Verhoeff's Working Solution:
 - 20 mL Stain 1
 - 8 mL Stain 2
 - 8 mL Stain 3

Test Method

- 3) Stain in Verhoeff's Working Solution for 15 – 30 mins.
- 4) Rinse in water.
- 5) Differentiate in Differentiating Fluid until elastic tissue fibres appear black on a grey background.
- 6) Rinse in water.
- 7) Rinse in 95% alcohol to remove any staining due to iodine alone.

- 8) Counterstain with Van Gieson's Stain.
- 9) Blot to remove excess stain.
- 10) Dehydrate rapidly through alcohols.
- 11) Clear in xylene and mount in permanent mounting medium (DPX).



Results

Elastic fibres	- black.
Other tissues: as for Van Gieson counterstain	
Collagen	- pink / deep red
Muscle, cytoplasm	- yellow

NOTES

- 1) Pre-treatment with 1% potassium permanganate for 5 minutes, followed by oxalic acid, improves sharpness and intensity of staining.
- 2) Rinsing in warm tap-water improves intensity of fibre staining.
- 3) Avoid over-differentiating the specimen as this loses the staining of finer fibres.
- 4) Working solution is usually stable for 2-3 hours; however, satisfactory results may be seen with solution up to 48 hrs old. Individual preference may prevail.

REFERENCES

Dacie J. V. & Lewis S. M. (1991) Practical Haematology [7th ed.] 115-116

Bancroft J. D. & Cook H. C. (1994) Manual of Histological Techniques and their diagnostic Applications. 152-3

Clin-Tech Ltd
Unit G Perram Works
Merrow Lane
GUILDFORD
GU4 7BN
United Kingdom

Telephone:
+44 (0)1483 301902
Fax:
+44 (0)1483 301907
Email:
info@clin-tech.co.uk

Instructions for use edition C22-69