

# CLIN-TECH LIMITED

## Masson's Trichrome Kit

IVD

Catalogue numbers  
631065



### INTENDED USE

Masson's Trichrome staining kit is used to differentiate between collagen and smooth muscle in tumors, and to identify increases in collagenous tissue in diseases such as cirrhosis of the liver.

### KIT PRESENTATION

#### Reagents

<input type="checkbox"/> Bouin's Fluid	500 mL
<input type="checkbox"/> Weigert's Solution 1	500 mL
<input type="checkbox"/> Weigert's Solution 2	500 mL
<input type="checkbox"/> Phosphomolybdic-Phosphotungstic Acid	500 mL
<input type="checkbox"/> Masson's Acid Fuchsin	500 mL
<input type="checkbox"/> Masson's Aniline Blue	500 mL
<input type="checkbox"/> 1% Acetic Acid Solution	500 mL

Also required but not supplied in this kit

- Graded alcohol solutions
- Xylene
- Neutral mounting media

### PROTOCOL

#### Preparation

- 1) Deparaffinize sections and hydrate to distilled water.
- 2) Rinse well in distilled water.
- 3) Mordant the section in Bouin's solution for 1 hr at 56°C.
- 4) Rinse in distilled water until the yellow colour disappears.
- 5) Prepare Weigert's haematoxylin by mixing equal volumes of Weigert's solutions 1 & 2.

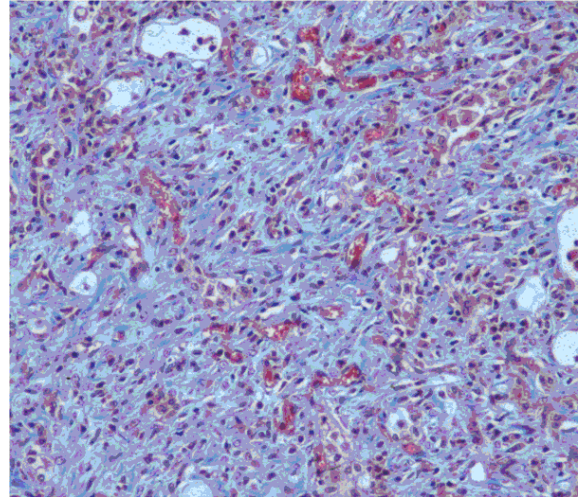
#### Test Method

- 6) Stain sections in Weigert's Haematoxylin for 10 minutes.
- 7) Rinse in running water for 10 minutes.
- 8) Rinse in distilled water.
- 9) Stain sections in Masson's Acid Fuchsin solution.
- 10) Rinse in distilled water.
- 11) Place slide in Phosphomolybdic-Phosphotungstic Acid solution for 10-15 minutes
- 12) Stain sections in Masson's Aniline Blue solution for 5 minutes.

- 13) Rinse the slide in distilled water.
- 14) Place the slides in 1% acetic acid solution for 3-5 minutes
- 15) Dehydrate with 95% and absolute alcohol, two changes each.
- 16) Clear with 2-3 changes of xylene and mount with synthetic resin.

#### Results

Nuclei	Black
Cytoplasm, Keratin, Muscle fibers	Red
Collagen and mucus	Blue
Fibrin	Pink
Erythrocytes	Red



Collagen-rich granulation tissue in the alveolar tissue (Goat)

### NOTES

Bouin's Fluid is preferred as the fixative but 10% neutral buffered formalin may be used

If desired, Collagen may be counterstained with Light Green SF instead of Aniline Blue.

### REFERENCES

1. Histology, A self instructional text, Freida L. Carson, 1990, pp 142-144
2. Bancroft JD, Stevens A. Theory and Practice of Histological Techniques, 4th edition, Churchill Livingstone Inc., New York, 1996
3. Luna LG. Manual of Histologic Staining Methods of the AFIP, 3rd edition. McGraw-Hill Book Company, New York, 1968
4. Luna LG. Histopathological Methods and Color Atlas of Special Stains and Tissue Artifacts, 1st edition, American Histolabs, Inc., Gaithersburg, MD, 1992
5. Sheehan DC Hrapchak BB: Theory and Practice of Histotechnology; 1980, pg 190. A.F.I.P. Laboratory Methods in Histotechnology: 1992, pg 132 - 133.

Clin-Tech Ltd  
Unit G Perram Works  
Merrow Lane  
GUILDFORD  
GU4 7BN  
United Kingdom

Telephone:  
+44 (0)1483 301902  
Fax:  
+44 (0)1483 301907  
Email:  
info@clin-tech.co.uk

Instructions for use edition C22-55