

SPEEDY DIFF SLIDE KIT

IVD

Catalogue number
610670



INTENDED USE

Clin-Tech's Speedy Diff Individual Slide kit is used for rapid differential staining.

CONTENTS

<input type="checkbox"/>	Reagent 1	30 mL	X 2
	Buffered Eosin		
<input type="checkbox"/>	Reagent 2	30 mL	X 2
	Buffered Azur / Methylene Blue		
<input type="checkbox"/>	Reagent 3	30-mL	X 1
	200 x Concentrated Sorensen's Buffer pH 6.9		

Also required but not supplied	Cat No.
• Methanol Fixative	61088x
• Immersion Oil	61099x

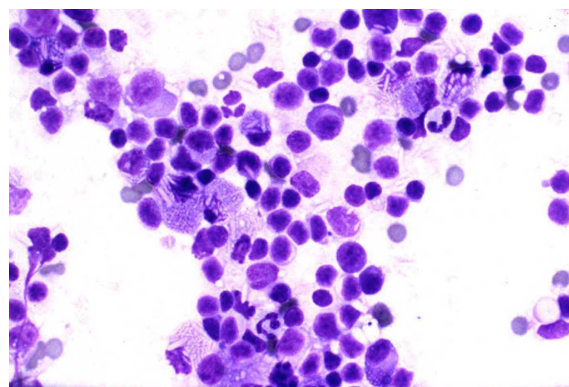
PROTOCOL

Preparation

- 1) Dilute 5 mL of Sorensen's buffer pH 6.9 (Reagent 3) to 1 Litre with distilled water. Use Reagents 1 & 2 undiluted.

Test Method

- 2) Make blood films in the normal way and air-dry.
- 3) Fix films in Methanol for 10 to 20 seconds
- 4) Rinse in working strength buffer solution. Shake off excess.
- 5) While still wet, add 10 – 12 drops of Reagent 1. Ensure film is completely covered with the stain and leave for about 15 seconds.
- 6) Add the same volume of Reagent 2. Mix and agitate thoroughly, preferably with a Pasteur Pipette. Leave for 60 seconds.
- 7) Rinse off excess stain with buffer. Differentiate in the working strength buffer for 5 – 10 seconds.
- 8) Dry and examine under an Oil Immersion Lens in the normal way.



Fine needle aspiration cytology of the right parotid mass showing numerous polymorphic lymphocytes. (medium high power $\times 550$).

Kanthan and Torkian *World Journal of Surgical Oncology* 2003 1:12 doi:10.1186/1477-7819-1-12

Chromatin of white blood cell	Purple to blue
Nuclei of Parasitic protozoa	Red to bright pink
Eosinophilic Granules	Bright Pink
Neutrophilic Granules	Purple
Red Blood Cells	Gray
Helicobacter Pylori	Blue
Nuclei	Blue-Purple
Cytoplasm	Pink-Orange

NOTES

- 1) Times can be varied to suit individual preferences.
- 2) In order to make direct comparisons with future investigations, further films may be stained by the routine procedure of the Laboratory

REFERENCES

1. Laboratory Medicine; Vol. 25, No. 6; June 1994; pp. 389

Clin-Tech Ltd
Unit G Perram Works
Merrow Lane
Guildford
GU4 7BN
United Kingdom

Telephone:
+44 (0) 1483 301902
Fax:
+44 (0) 1483 301907
Email:
info@clin-tech.co.uk

Instructions for use edition C22-66